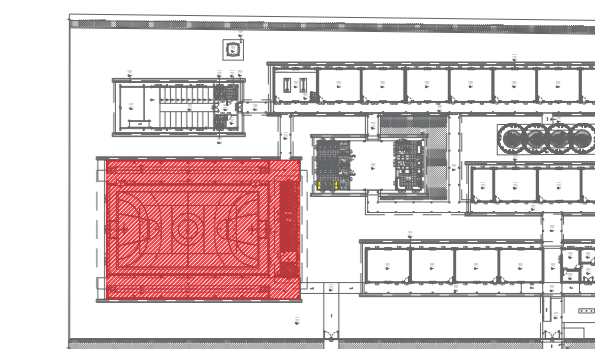


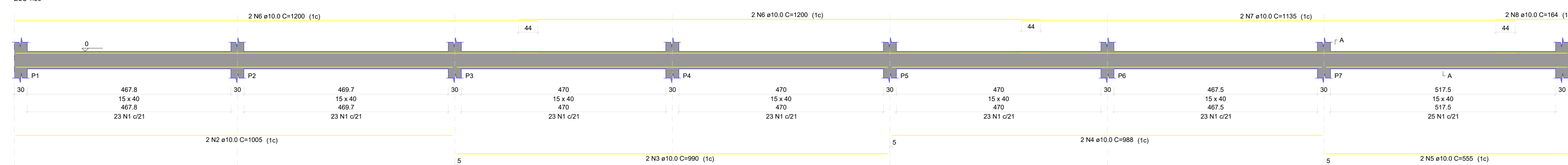
OBSERVAÇÕES:



CROQUI DE REFERÊNCIA

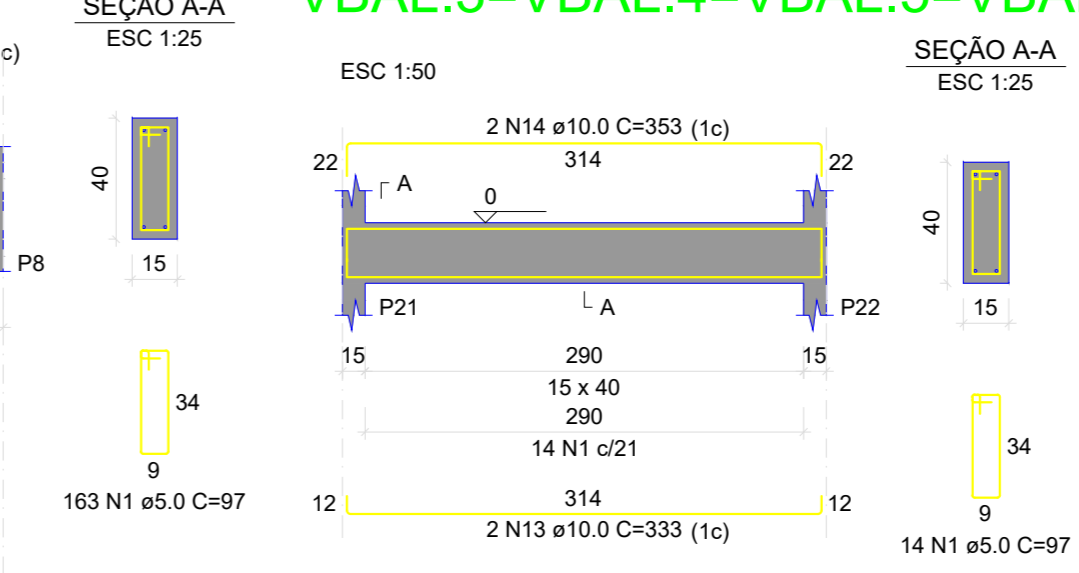
VBAL.1 = V.BAL9

ESC 1:50



VBAL.3=VBAL.4=VBAL.5=VBAL.6=VBAL.8

ESC 1:25



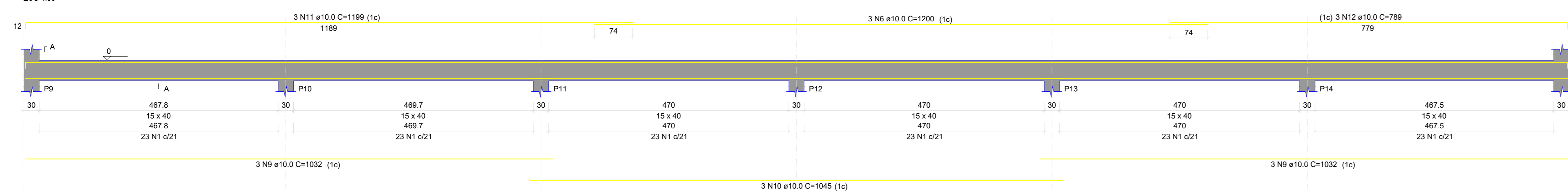
RESUMO DO AÇO

AÇO	DIAM (mm)	C TOTAL (m)	QUANT + 5% (Barras)	UNID	PERO + 5% (kg)
CAPO	10.0	1200.2	106	12 m	778.9
CAPO	9.0	1010.7	106	12 m	778.9
PESO TOTAL (kg)					1557.8
CAPO	10.0	1200.2	106	12 m	778.9
CAPO	9.0	1010.7	106	12 m	778.9

Volume de concreto CC-25 = 12.75 m³
Área da forma = 202.20 m²

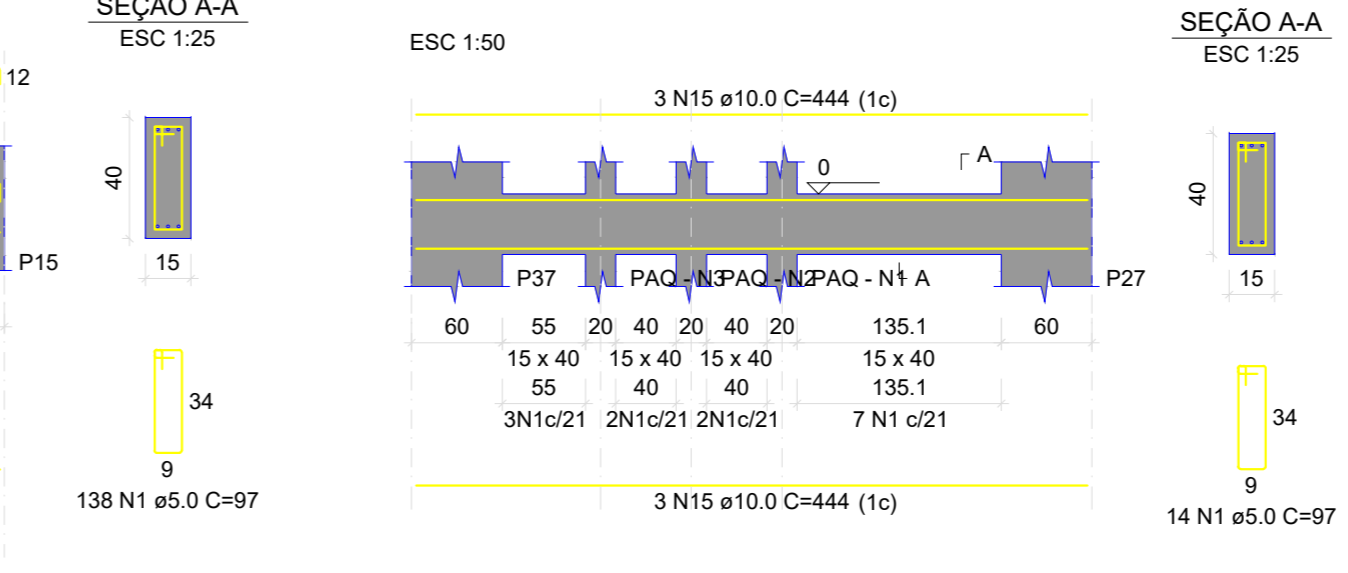
VBAL.2 = V.BAL7

ESC 1:50



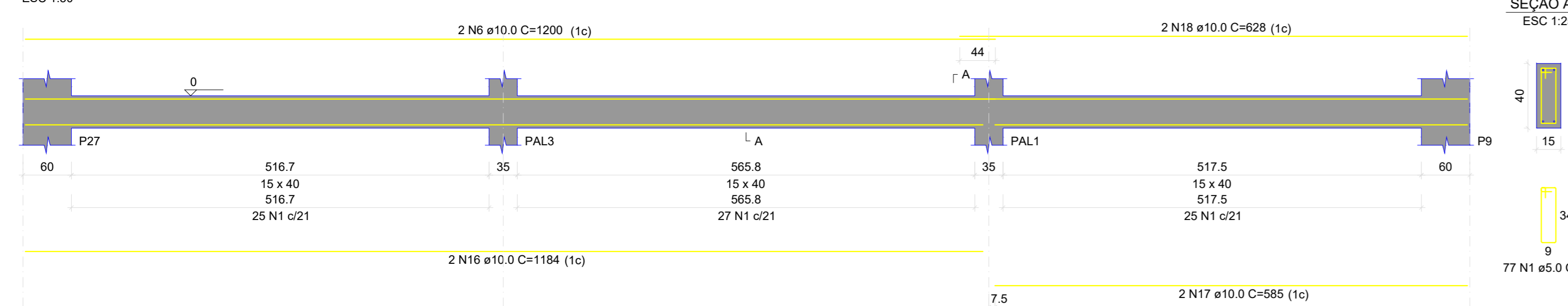
VBAL.10=VBAL.12=VBAL.13=VBAL.15

ESC 1:25



VBAL.11=VBAL.14

ESC 1:50



VBAL.16=VBAL.17

ESC 1:50

