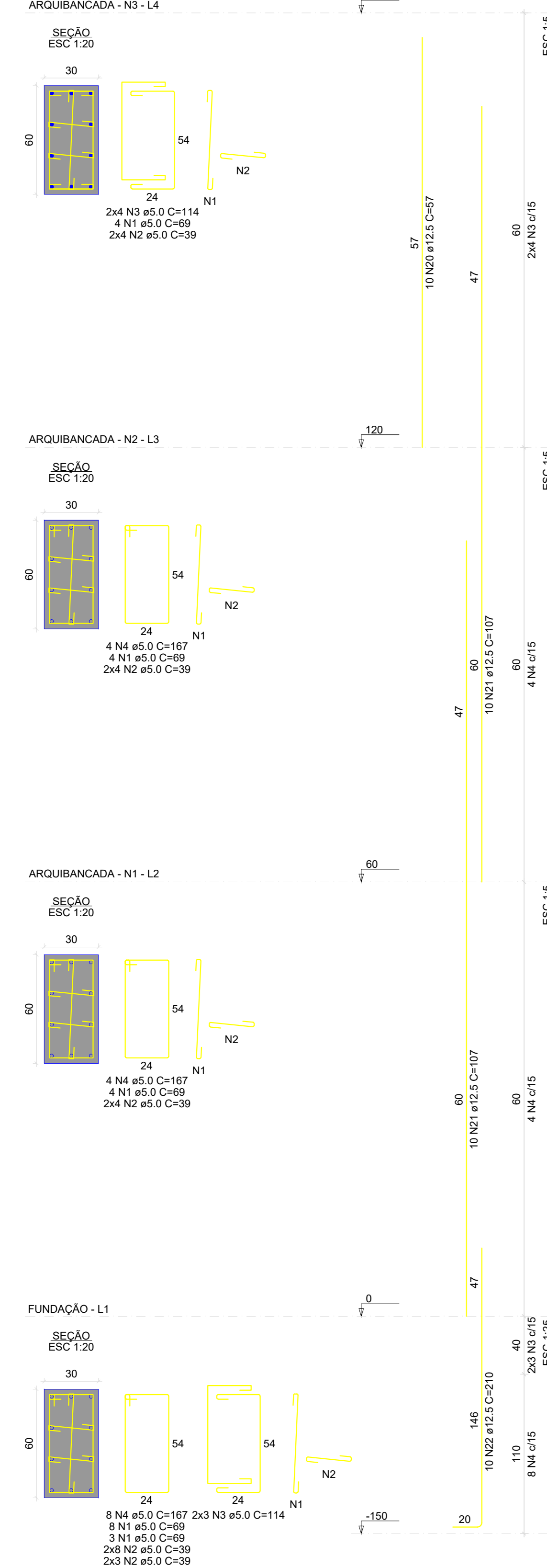
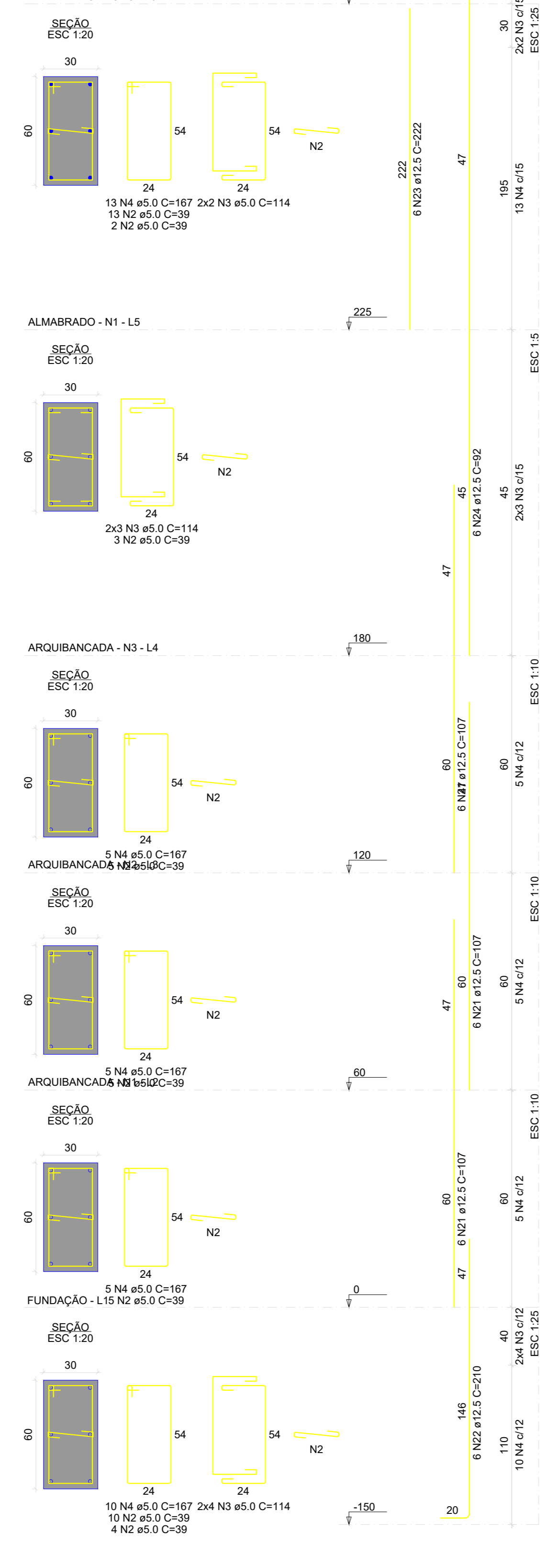


CROQUI DE REFERÊNCIA

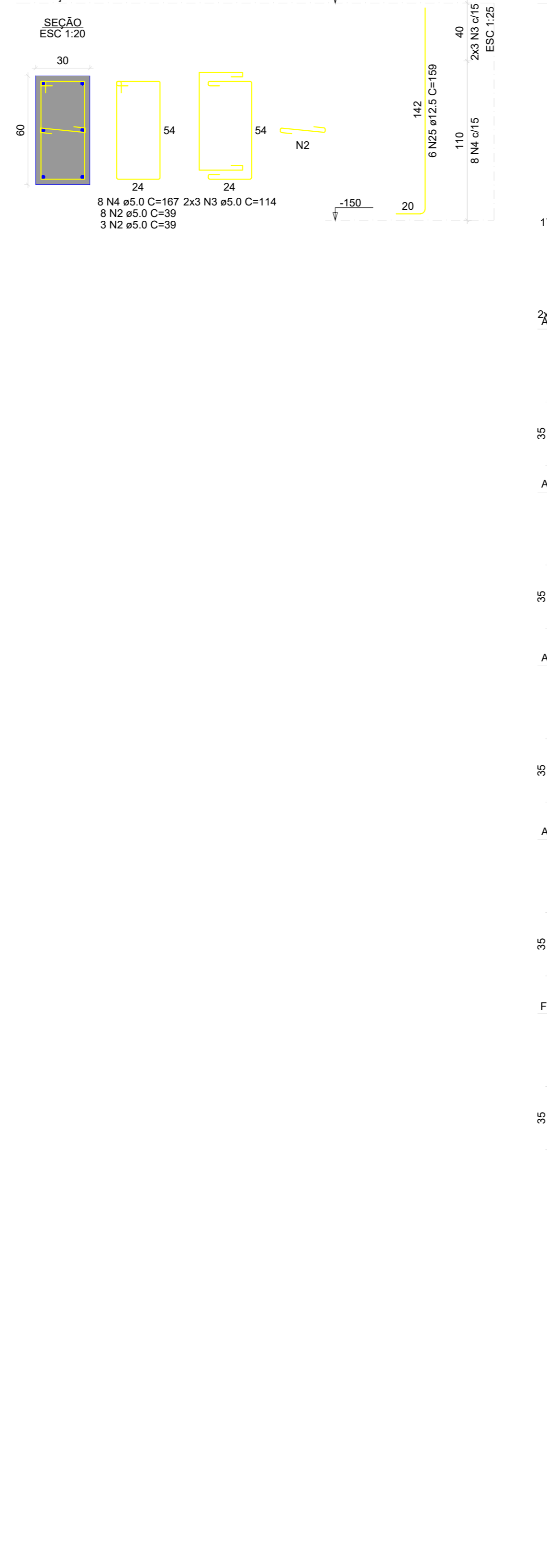
P1=P2=P3=P4=P5=P6=P7=P8=P37=P38=P39=P40=P41=P42=P43=P44



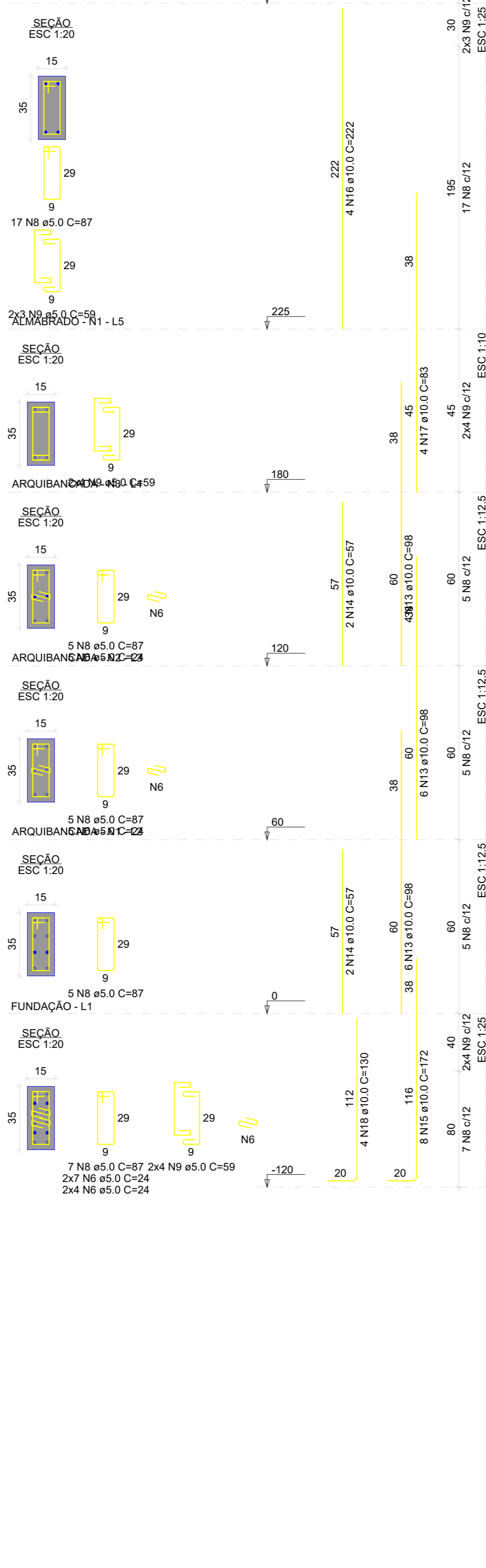
P9=P15=P27=P33



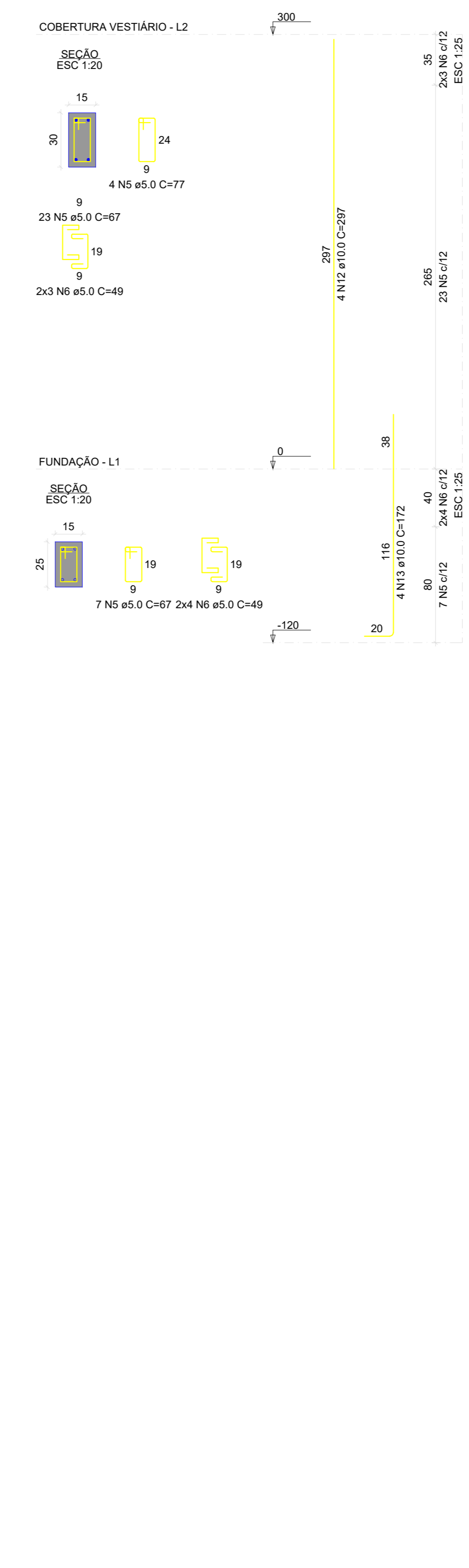
P10=P11=P12=P13=P14=P18=P28=P29=P30=P31=P32=P36



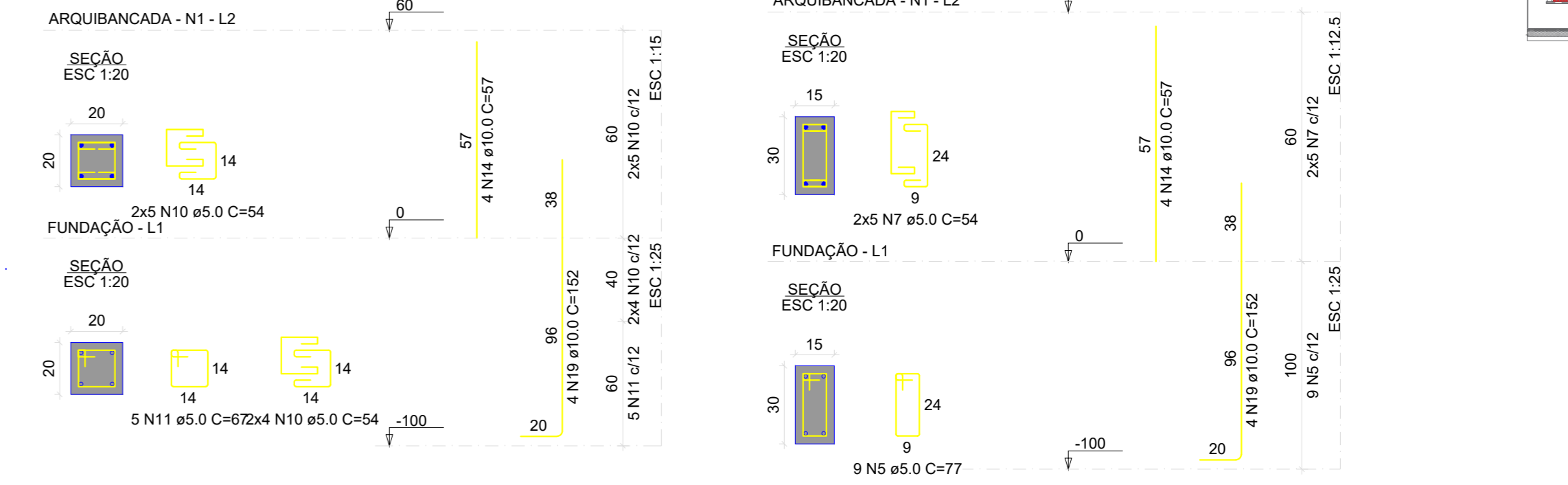
PAL1=PAL2=PAL3=PAL4



P16=P17=P19=P20=P21=P22=P23=P24=P25=P26=P34=P35



PAQ - N1 - 1 = PAQ - N1 - 5 = PAQ - N1 - 6 = PAQ - N1 - 10 PAQ - N1 - 2 = PAQ - N1 - 3 = PAQ - N1 - 4 = PAQ - N1 - 7 = PAQ - N1 - 8 = PAQ - N1 - 9

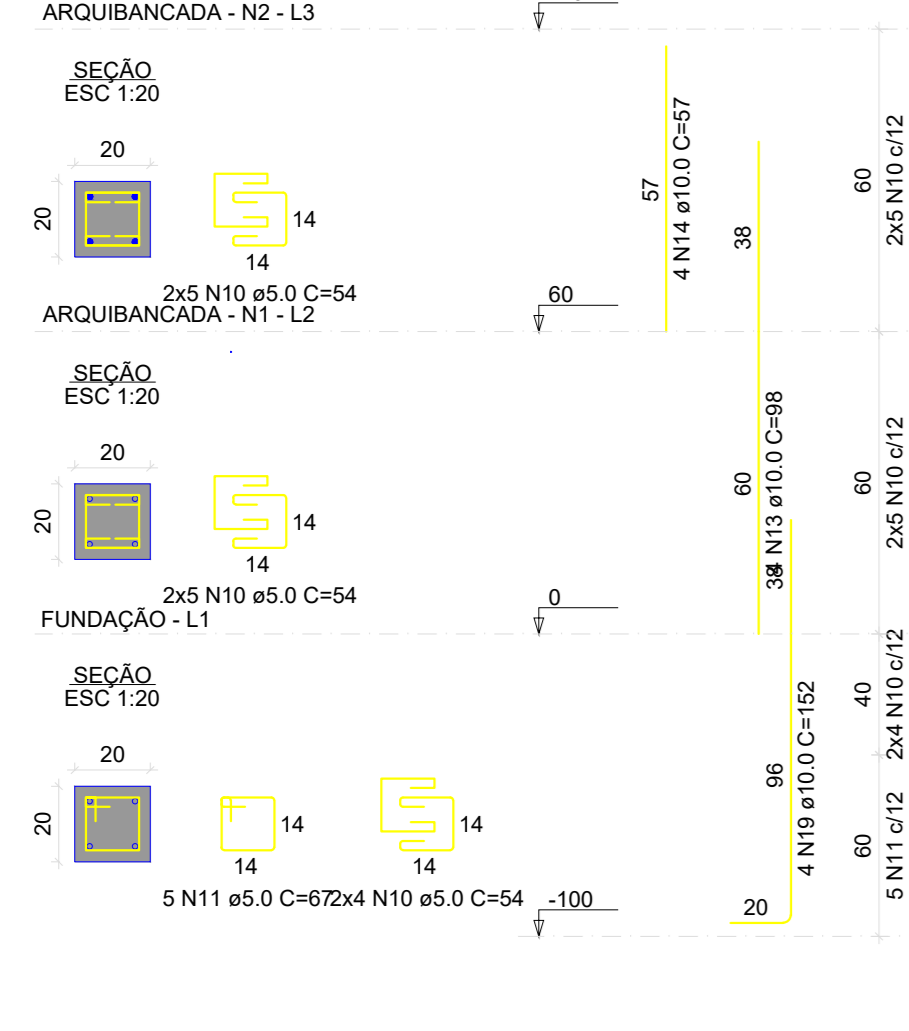


RESUMO DO AÇO

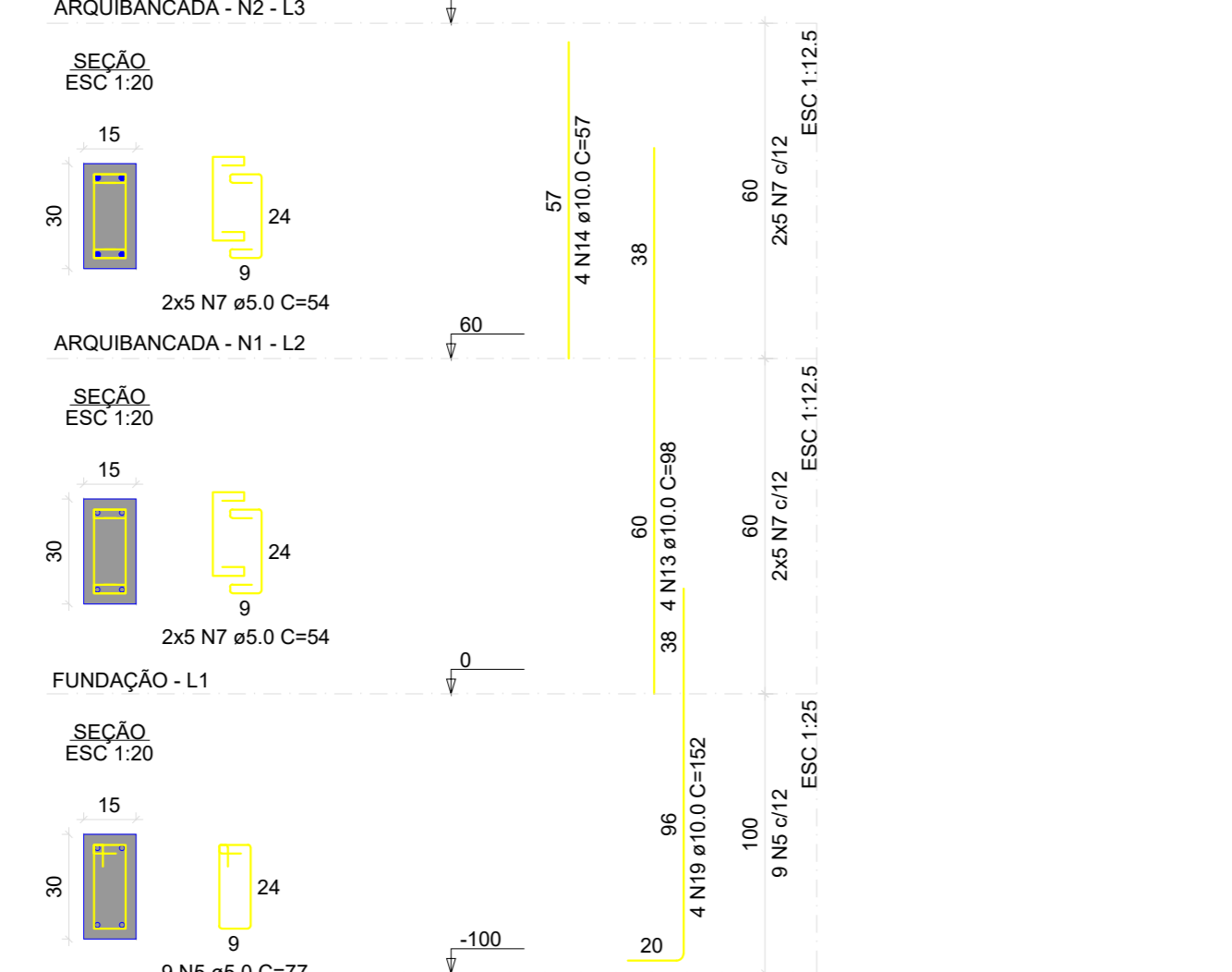
| AÇO             | DIAM (mm) | C.TOTAL (m) | QUANT + 5% (Barras) | UNIT          | PESO + 5% (kg) |
|-----------------|-----------|-------------|---------------------|---------------|----------------|
| CA50            | 10.0      | 983.7       | 75                  | 12 m          | 559.1          |
| CA60            | 12.5      | 1088.9      | 95                  | 12 m          | 1099.4         |
| CA60            | 5.0       | 3006.8      | -                   | rolo (170 kg) | 486.6          |
| PESO TOTAL (kg) |           |             |                     |               |                |
| CA50            |           |             |                     |               | 1658.5         |
| CA60            |           |             |                     |               | 486.6          |

Volume de concreto (C-25) = 19.15 m³  
Área de forma = 240.02 m²

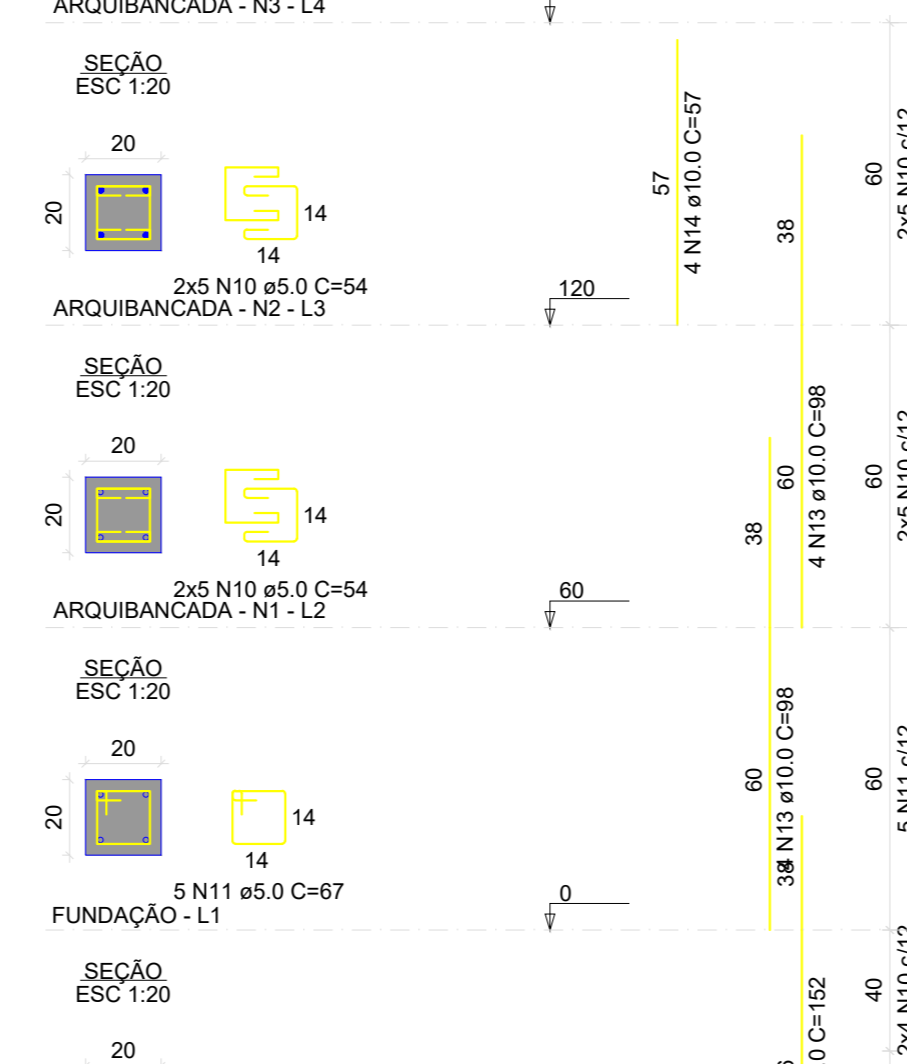
PAQ - N2 - 1 = PAQ - N2 - 5 = PAQ - N2 - 6 = PAQ - N2 - 10



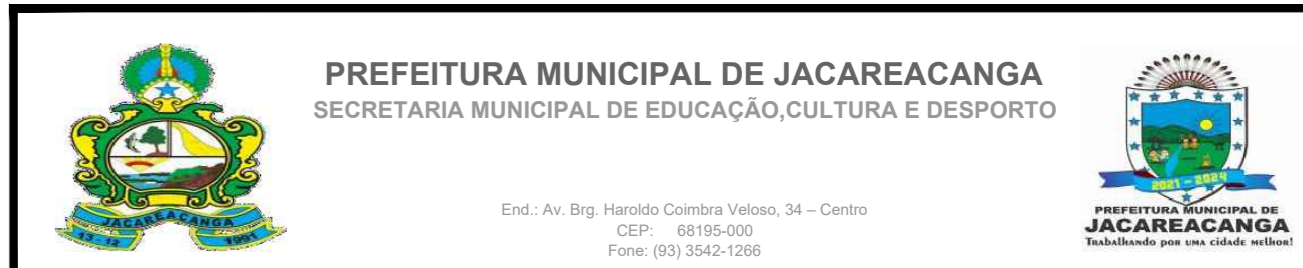
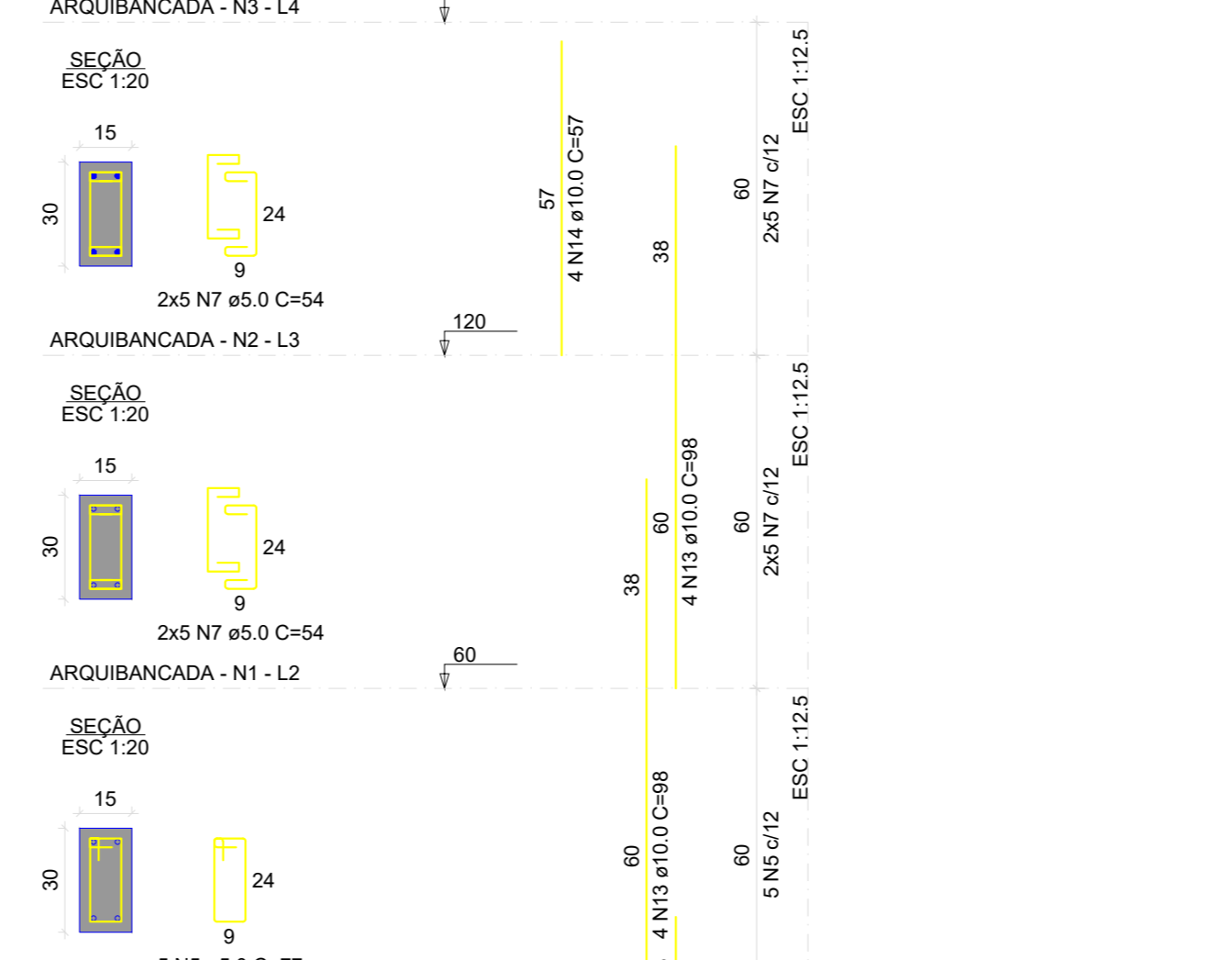
PAQ - N2 - 2 = PAQ - N2 - 3 = PAQ - N2 - 4 = PAQ - N2 - 7 = PAQ - N2 - 8 = PAQ - N2 - 9



PAQ - N3 - 1 = PAQ - N3 - 5 = PAQ - N3 - 6 = PAQ - N3 - 10



PAQ - N3 - 2 = PAQ - N3 - 3 = PAQ - N3 - 4 = PAQ - N3 - 7 = PAQ - N3 - 8 = PAQ - N3 - 9



PREFEITURA MUNICIPAL DE JACAREACANGA  
SECRETARIA MUNICIPAL DE EDUCAÇÃO, CULTURA E ESPORTE

PROJETO ESTRUTURAL  
REFORMA E AMPLIAÇÃO DA ESCOLA ESTADUAL DE INDIRIO MÊDIO BRAGADEIRO HAROLDI COMBREA VELOSO

Proprietário: PREFEITURA DE JACAREACANGA  
Local: AVENIDA RAIMUNDO J. SANTOS, S/Nº, BAIRRO BELA VISTA - JACAREACANGA - PA

Responsável Técnico: MARLENE DE SOUZA RODRIGUES  
Inscrição: 001 - 164.114.10511-7