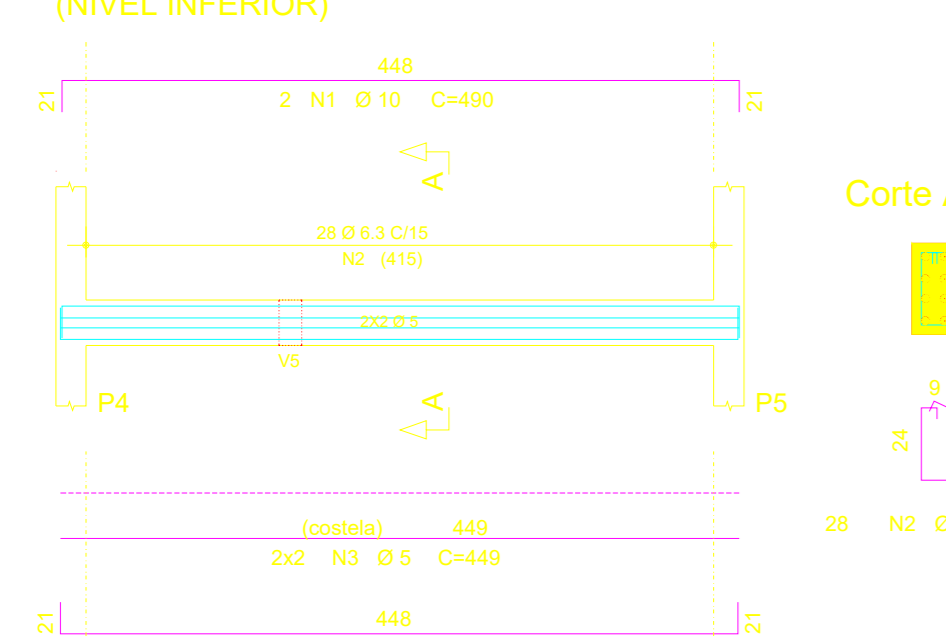
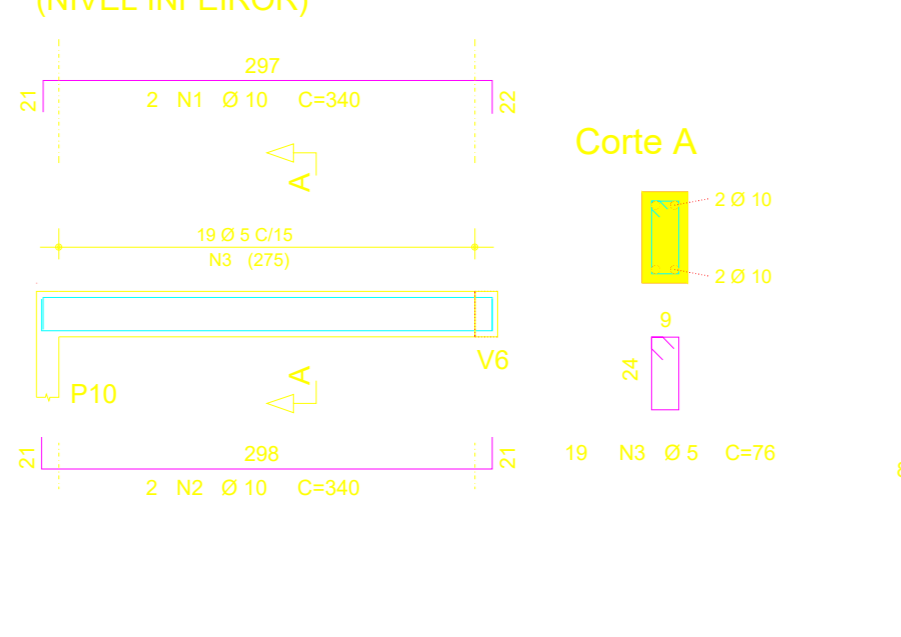


CROQUI DE REFERÊNCIA

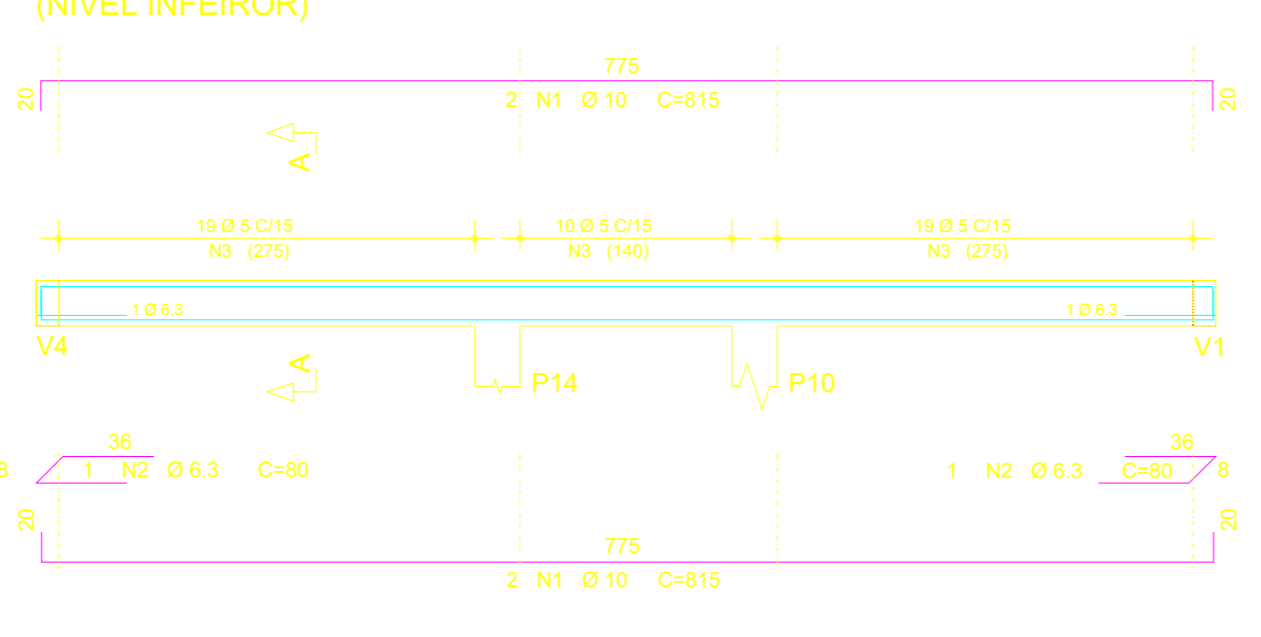
V1=V4



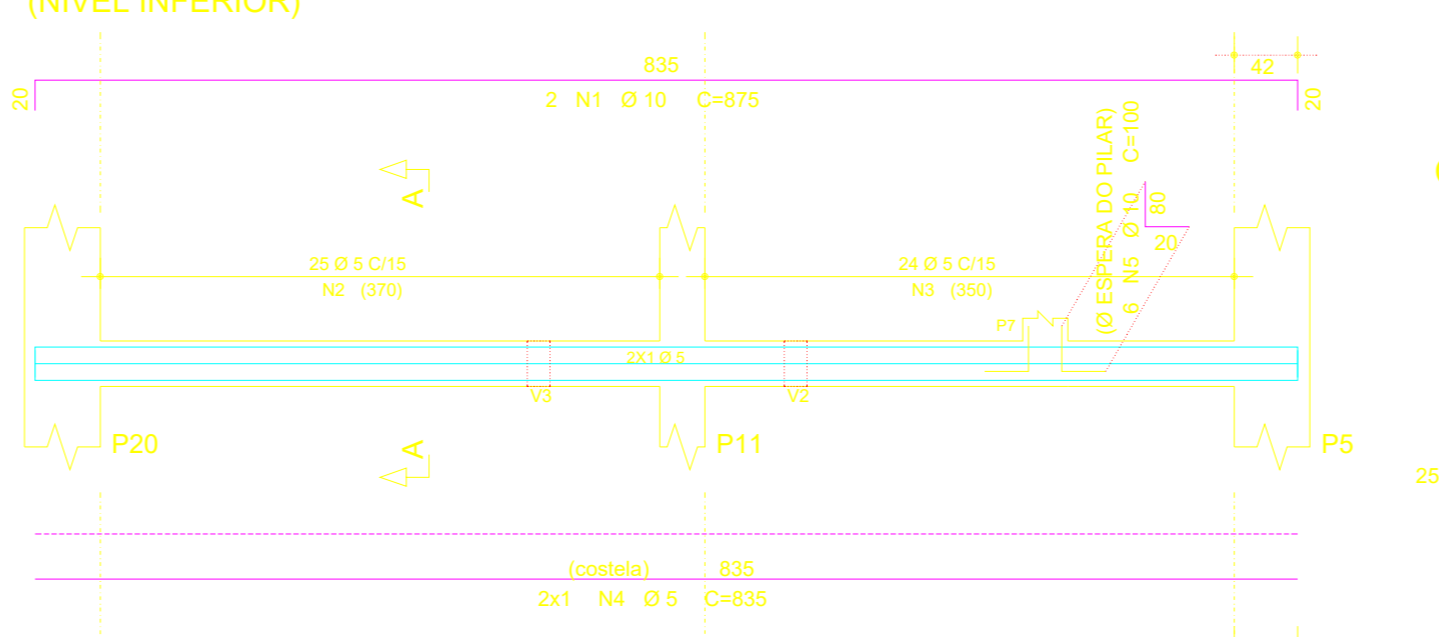
V2=V3



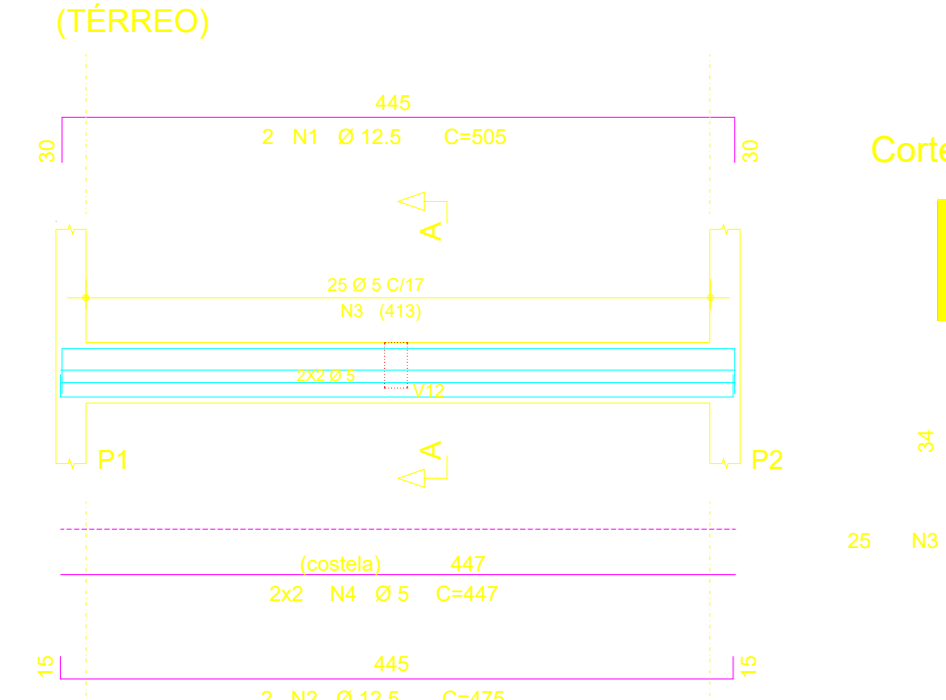
V5



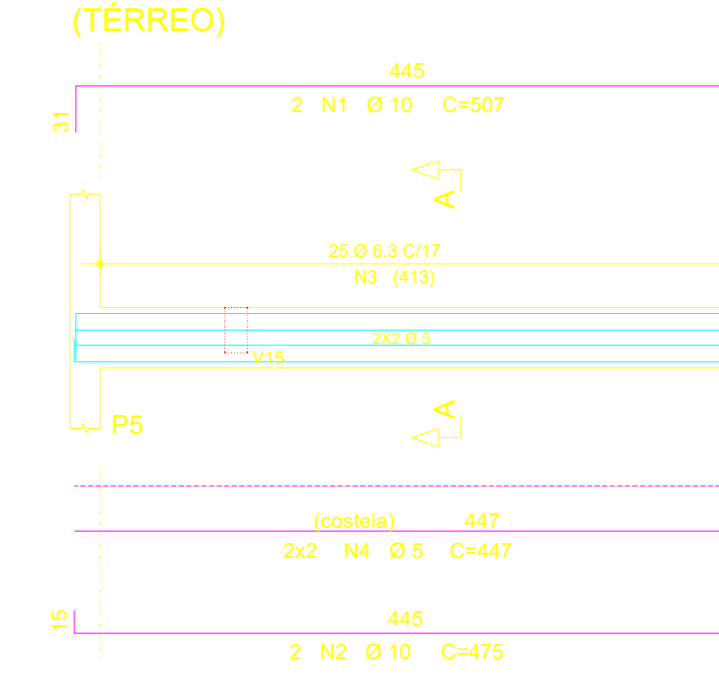
V6



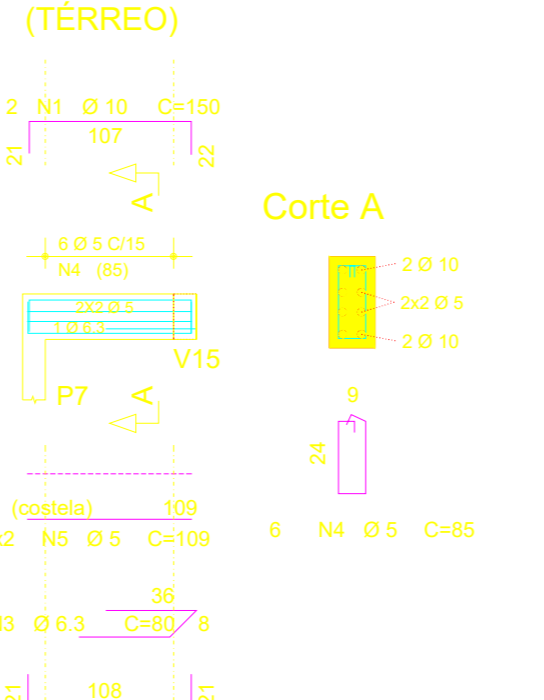
V1=V5=V8=V9



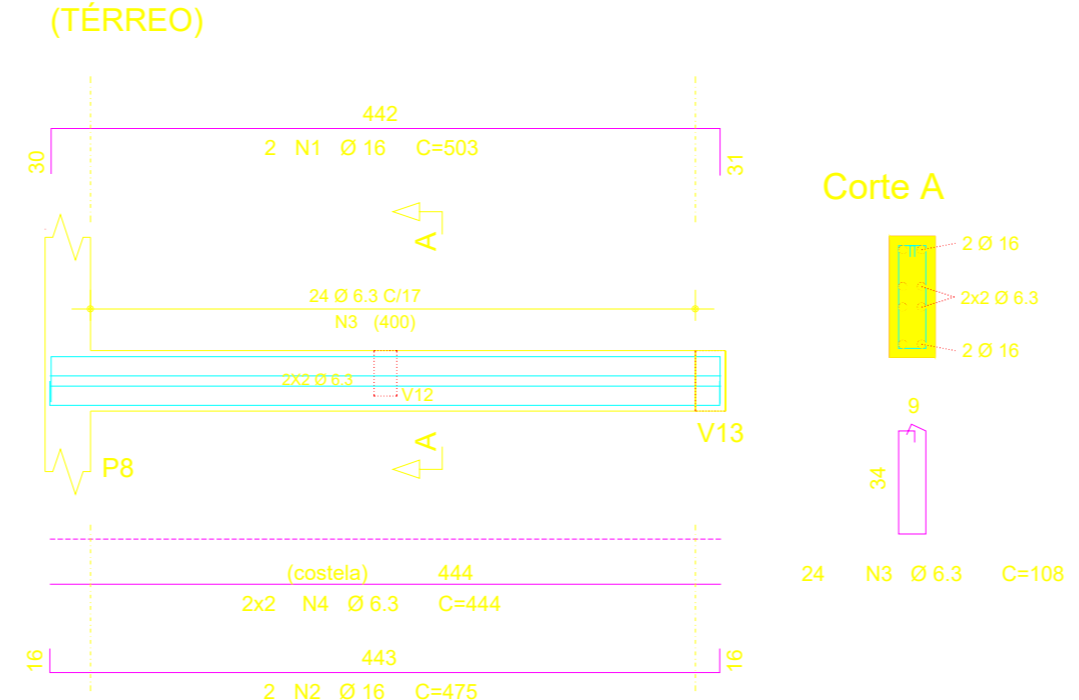
V2



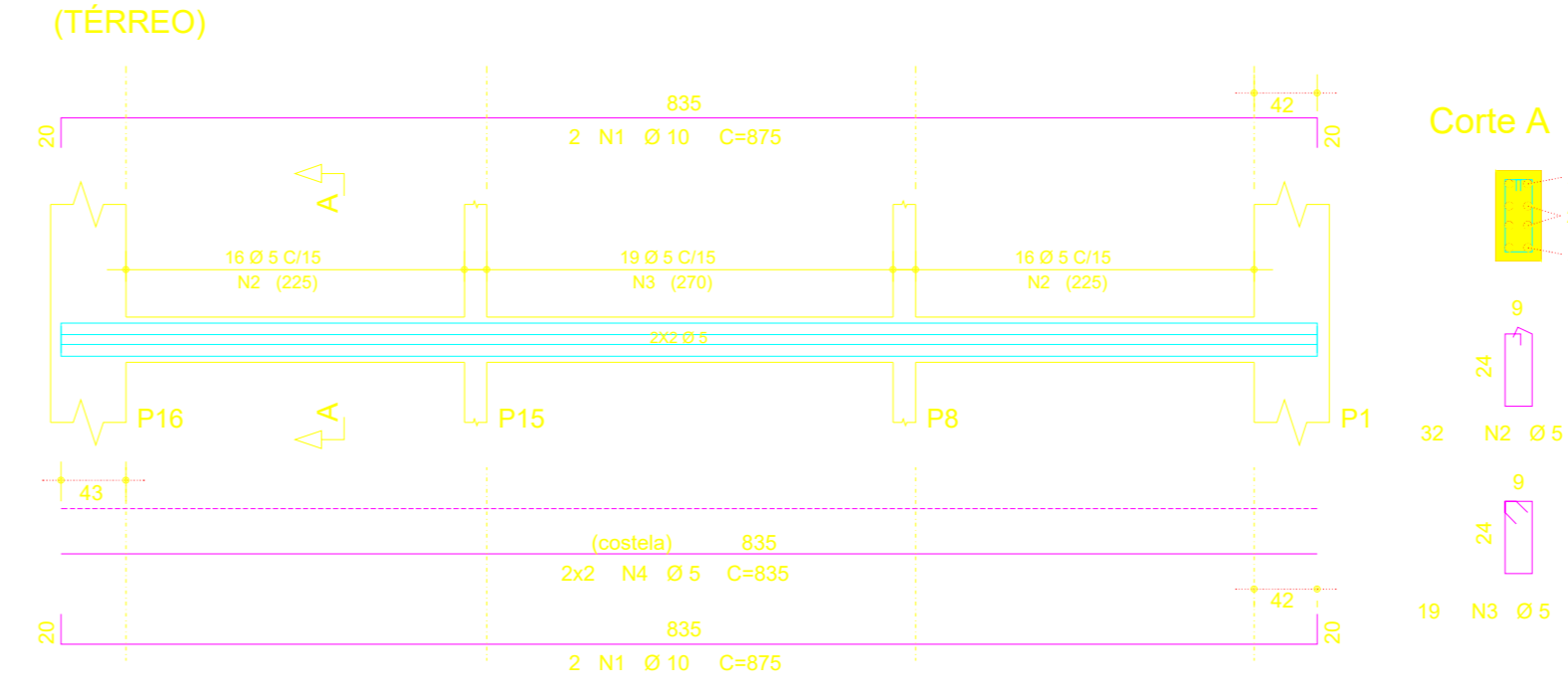
V3



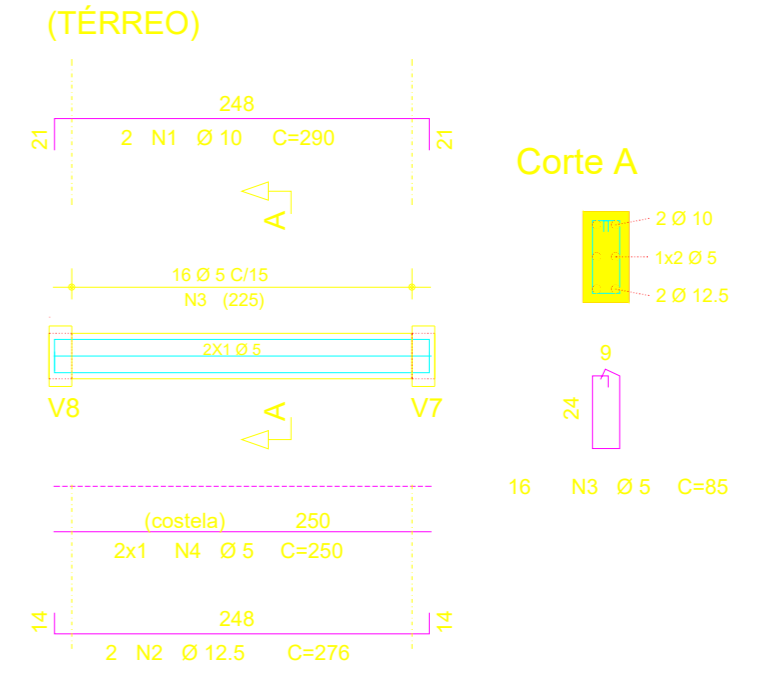
V4=V7



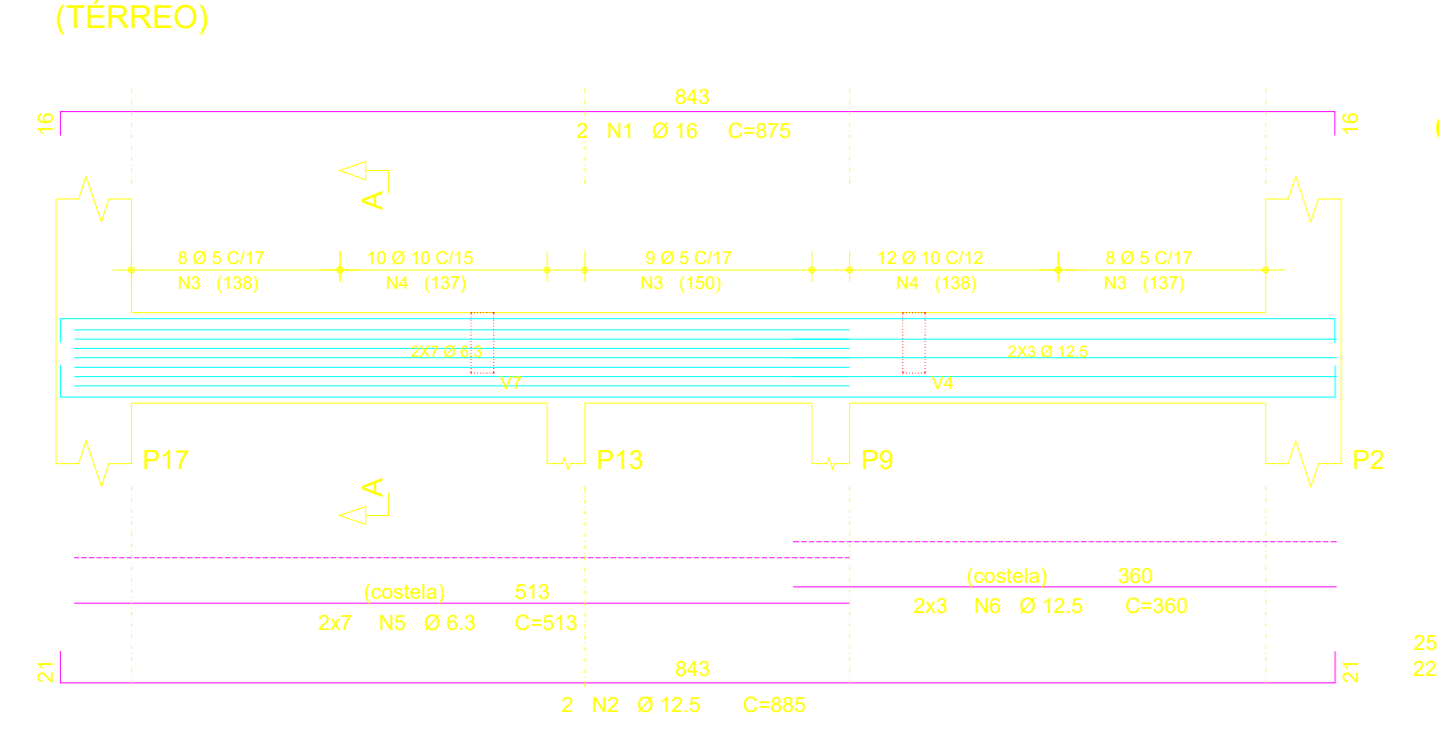
V10



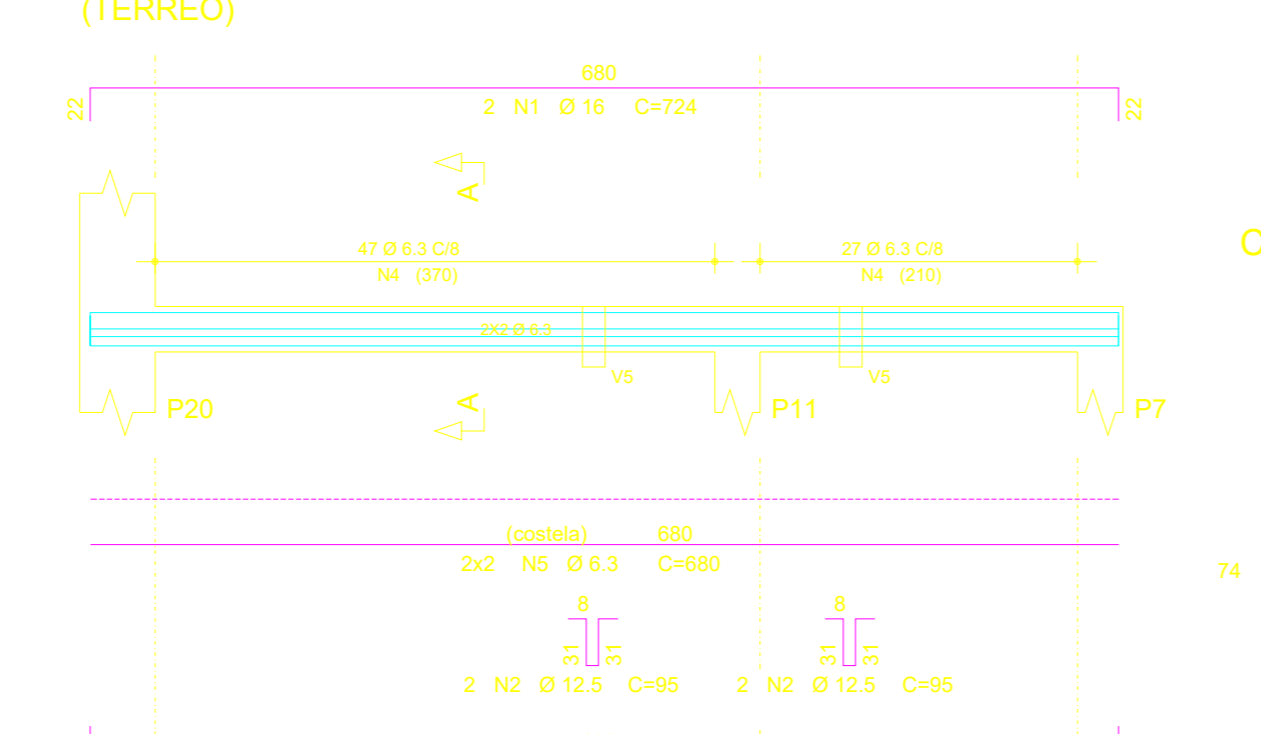
V11=V12



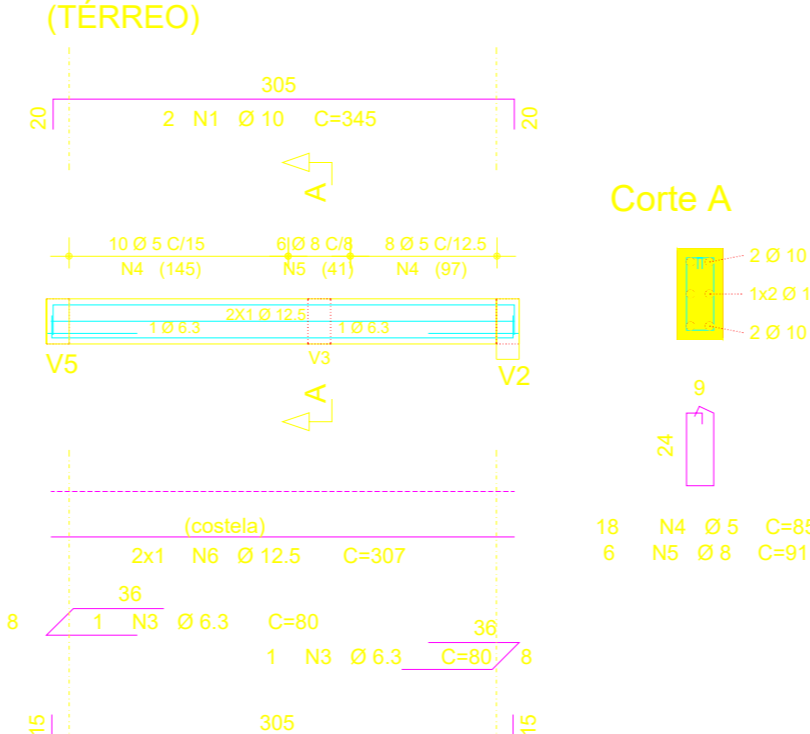
V13



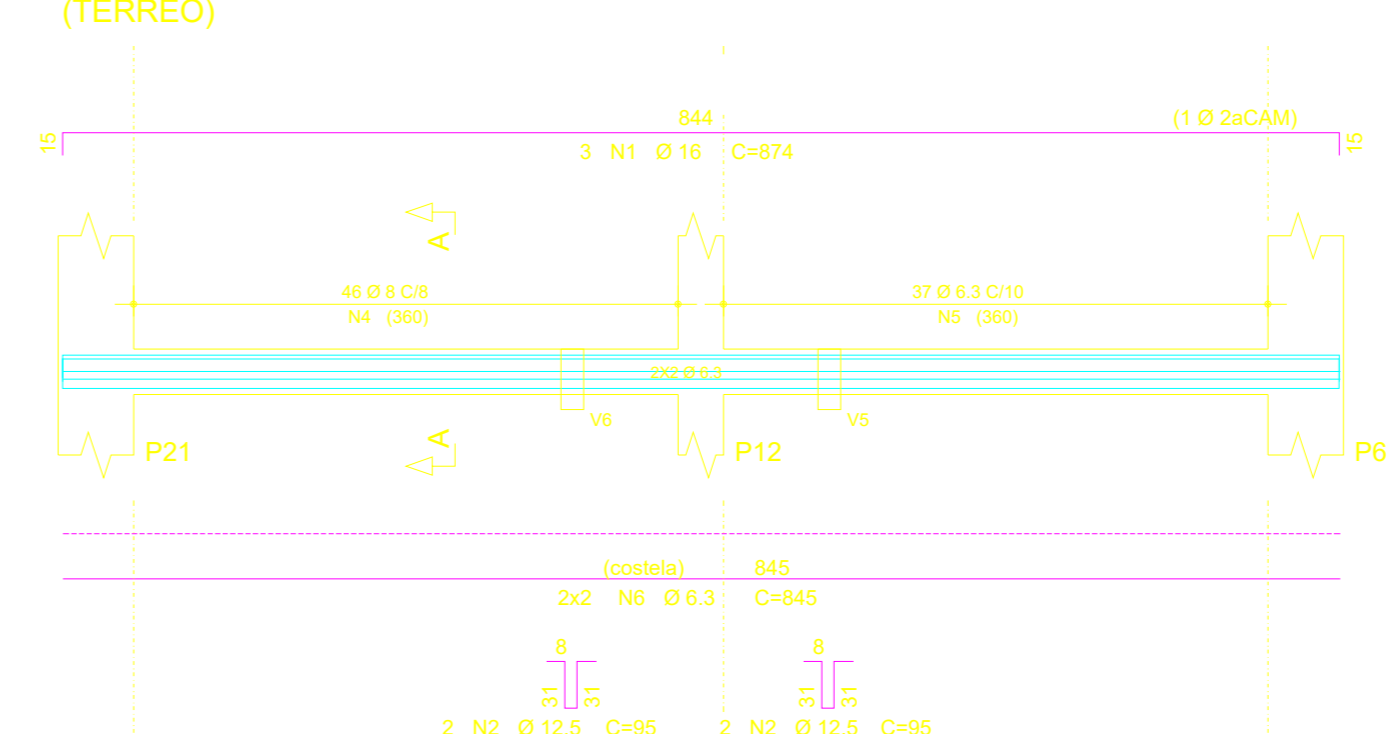
V14



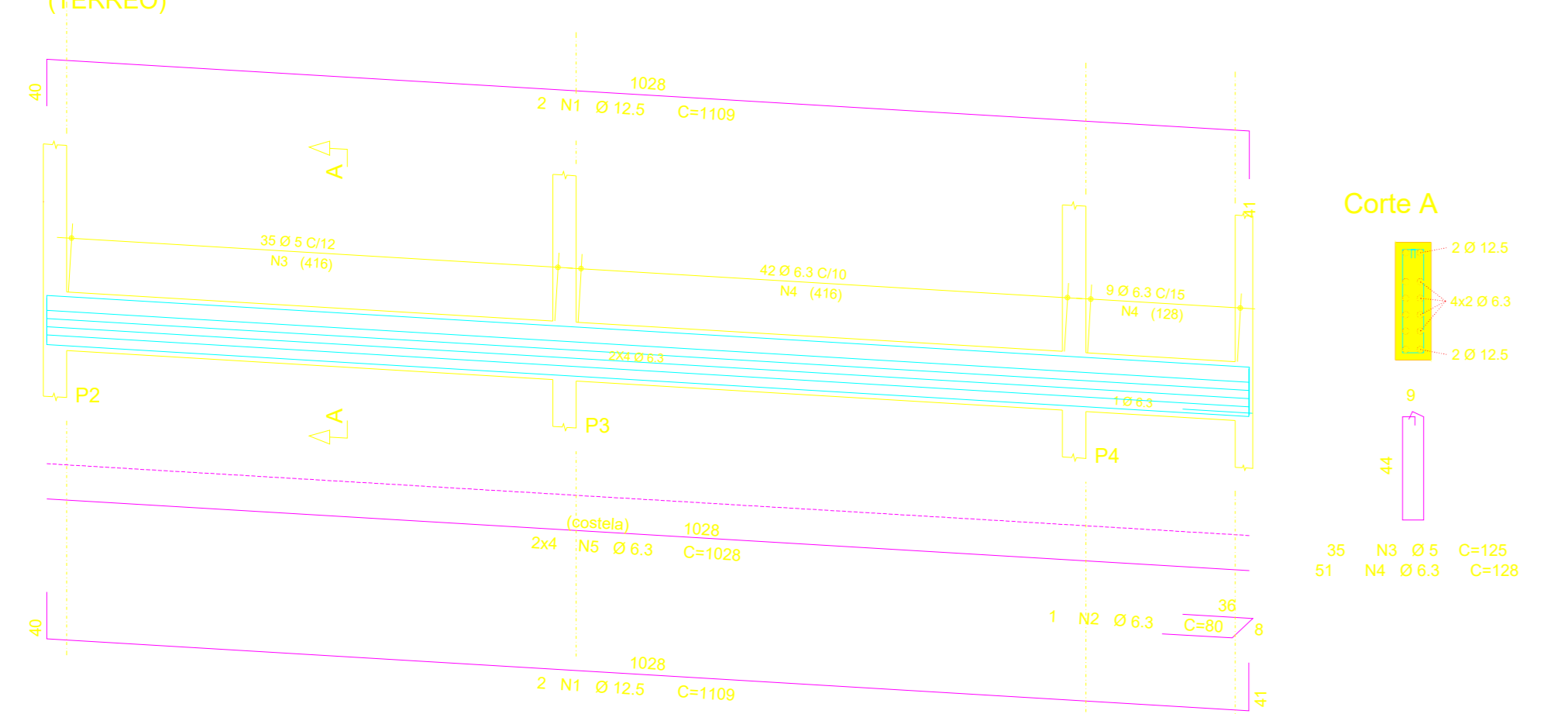
V15



V16



VR1=VR4



VR2=VR3

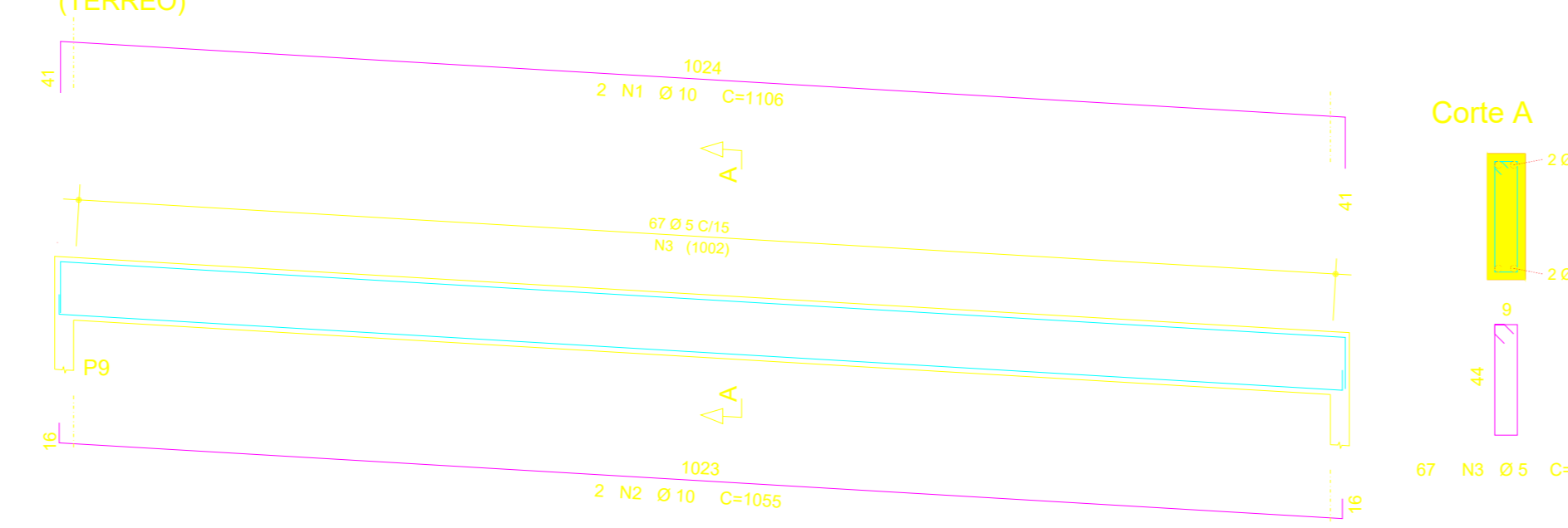


Table with columns: AÇO, POS, BIT (mm), QUANT, COMPRIMENTO (cm), TOTAL (cm³). It lists quantities and volumes for various reinforcement bars (V1-V16, VR1-VR4) across different levels.

Table titled 'RESUMO AÇO CA 50-60' with columns: AÇO, BIT (mm), COMPR, PESO. It summarizes the weight of reinforcement bars.

Volume de concreto = 18,80 m³  
Área de forma (m²) = 100,00



PREFEITURA MUNICIPAL DE JACAREACANGA  
SECRETARIA MUNICIPAL DE EDUCAÇÃO, CULTURA E ESPORTO  
PROJETO ESTRUTURAL  
REFORMA E AMPLIAÇÃO DA ESCOLA ESTADUAL DE ENSINO MÉDIO BRIGADEIRO HAROLDO COMBRA VELOSO  
Autor do Projeto: MARILENE DE SOUZA RODRIGUES